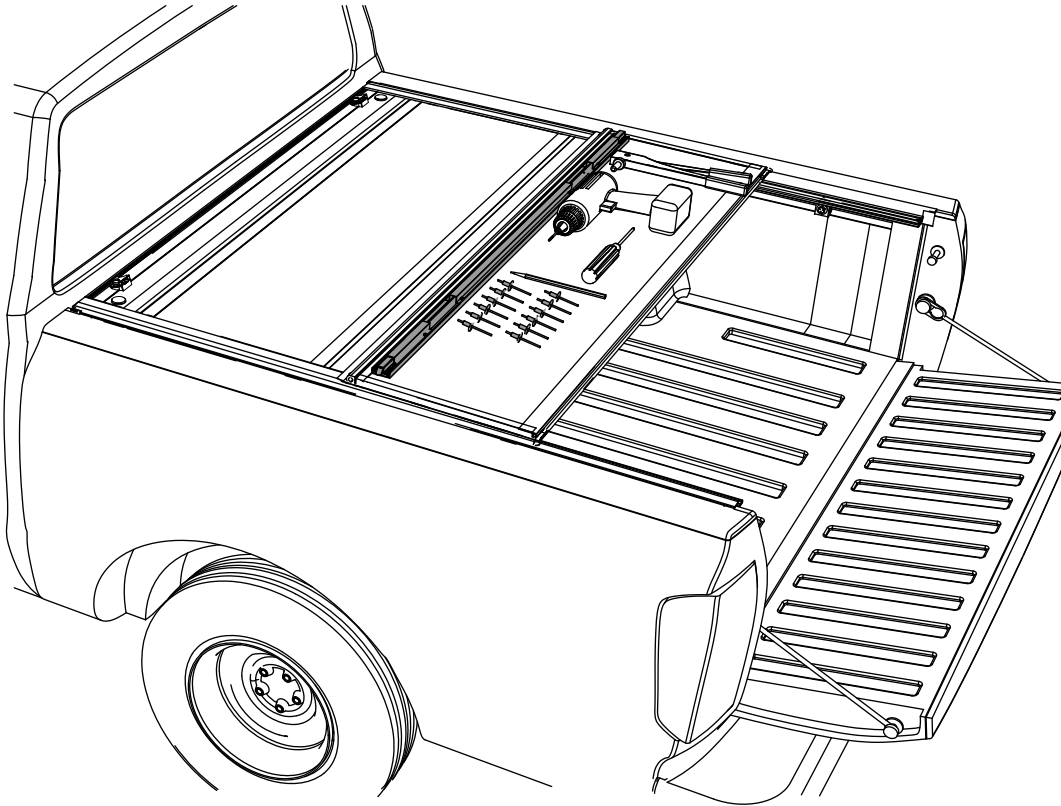


# INSTALL SHEET

## Latch Assembly Replacement



# IMPORTANT: READ FIRST



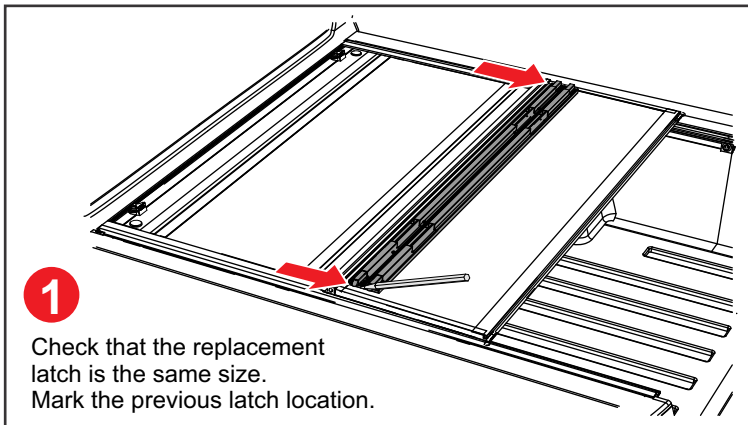
The Latch Kit includes:

- Complete latch assembly
- Rivets

Required Tools:

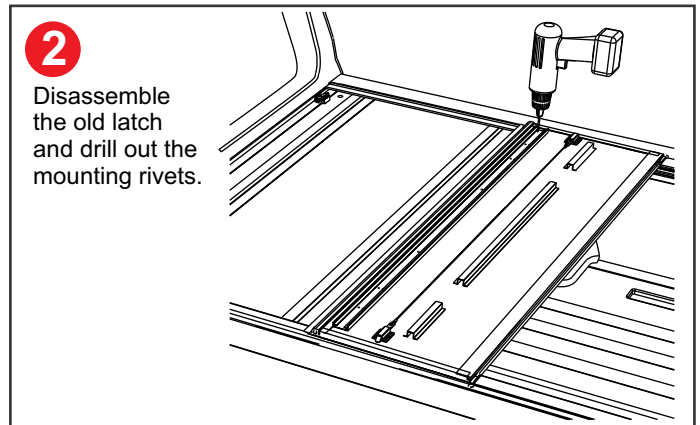
- Pencil to mark locations
- Electric drill with a 9/64" drill bit
- Philips screwdriver
- Rivet tool

Any standard/medium grade rivet tool as available at major retailers.  
(ex: Stanley 10" Medium Duty Riveter Model MR33C)



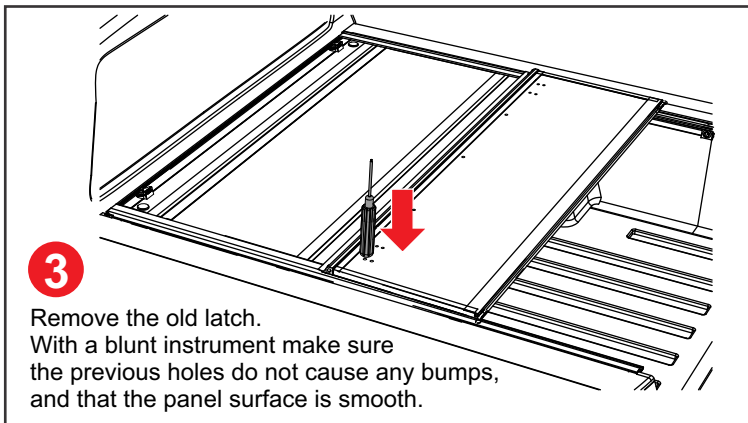
**1**

Check that the replacement latch is the same size. Mark the previous latch location.



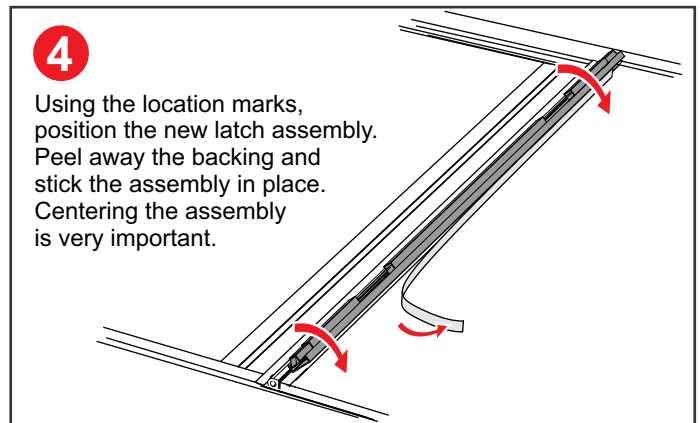
**2**

Disassemble the old latch and drill out the mounting rivets.



**3**

Remove the old latch. With a blunt instrument make sure the previous holes do not cause any bumps, and that the panel surface is smooth.



**4**

Using the location marks, position the new latch assembly. Peel away the backing and stick the assembly in place. Centering the assembly is very important.

# INSTALL SHEET

## Latch Assembly Replacement



**5** With the new latch in place, disassemble the latch by removing the screws, covers and sliding the cable pull assemblies out.

**6** Mark and drill the mounting holes. 4 on each end, with 3 spaced out through the center.

**Always wear safety glasses**

**! Important Note:**  
The hole only needs to be the depth of the rivet.  
**Do Not drill through the panel!**

Mark the drill's depth

**!** Tech Tip- Wrapping the drill bit with tape at your desired drill depth marks the distance and provides a temporary stop.

**7** Install the required 11 rivets.

**8** Reassemble the new latch, a reverse of the previous disassembly. Slide the cable pull assemblies into the bracket, and mount with the screws. Then remount the covers.

**!** Hand tighten assembly screws to not over-torque or strip the screws.

**9** Open and close the cover to make sure the latch fits and latches correctly and securely. Adjust your new latch per the screws and slots in Step 8 if necessary

**1st** **THEN 2nd**

For final adjustments, the latch brackets are slotted. It is very important to maintain full contact between the latch pall and the rail.