

326A0001 – Service Kit: Flap Seal for Cab and/or Tailgate

Do attempt to install this service kit if the temperature is less than 65 F, or if the exterior surfaces of your Tonneau cover are wet from rain or condensation.

Tools Required: Scissors or utility knife

Kit content:

Description	Quantity
Flap Seal (makes 2 seals)	65" length
Abrasive pad	1
Alcohol prep pad	2
3M Primer 94 Ampule	2
3M PT1100 Tape Strip 3/4"	4
Instruction Sheet	1

Kit contains sufficient contents to replace 2 Flap Seals, the Cab and/or Tailgate. Verify contents of kit before proceeding.

STEP 1: Place Tonneau, top down on a soft flat work surface. (Replacement of rear Flap Seal can be accomplished with Tonneau on vehicle. Removal of Tonneau cover is required for Cab-End seal replacement).

STEP 2: Remove existing Flap Seal if still attached, and remove any residual foam/adhesive from aluminum end rail and side seal flaps.

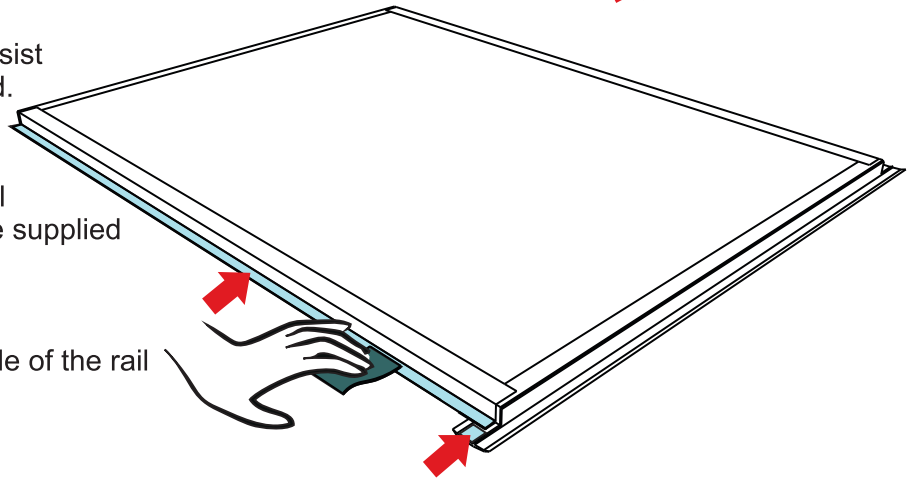
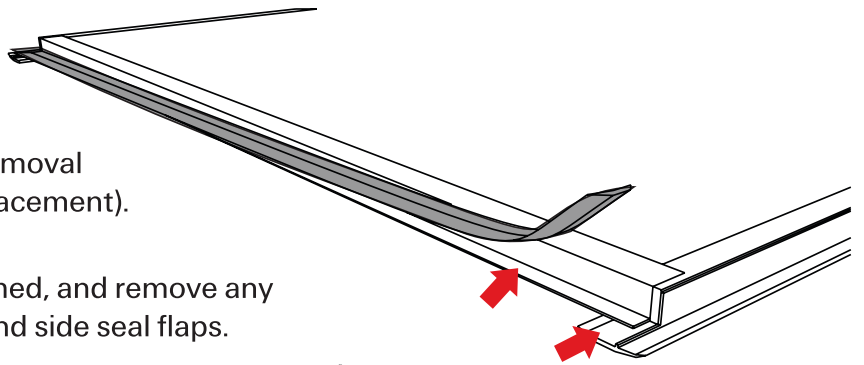
STEP 3: Scuff the underside of the rail to assist with adhesion. Use the included abrasive pad.



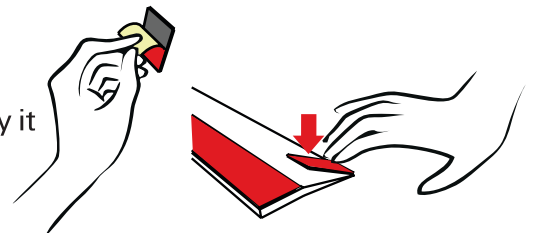
STEP 4: Wipe down the underside of the rail and the underside of the side seal ends with the supplied alcohol prep pad. Allow time to dry.

STEP 5: Apply 3M Primer 94 to the underside of the rail per application instructions on container. Allow to dry for 5 minutes.

STEP 6: Tear included Flap Seal strip down the center to form 2 individual strips. Reverse 1 strip for future use.



STEP 7: Remove protective film from one side of the tape strip and apply it on the lip of one end of the Flap Seal.



326A0001 – Service Kit: Flap Seal for Cab and/or Tailgate

STEP 8: Remove protective film from the installed tape strip. Remove approximately 3" of the protective film from the Flap Seal, fold the film out at a 45-degree angle on the lip side of the Flap Seal forming a tail.

STEP 9: Align the end of the Flap Seal, tape side down, with the end of the aluminum rail, and align the back edge of the Flap Seal into the inside corner of the aluminum rail.

STEP 10: Press the Flap Seal against the aluminum end rail, then bend the flap of the side seal upward to contact the tape strip on the Flap Seal. Press the two together firmly, hold for a few seconds.

STEP 11: Pull approximately 12" more of the protective film off from the Flap Seal by pulling on the tail created in step 7. Press the seal firmly against the aluminum end rail, maintaining contact between the back edge of the Flap Seal, and the bottom corner of the aluminum end rail. Continue this process until you get within a few inches of the other side of the Tonneau.

CAUTION: Do not stretch the Flap Seal during installation.

STEP 12: Using scissors or a knife, cut off the excess length of the Flap Seal so that it is even with the end of the aluminum rail.

STEP 13: Fold back the loose end of the Flap Seal and install the remaining tape strip per Step 6.

STEP 14: Remove the remaining protective film from the Flap Seal and tape strip. Fold the seal back over, and press firmly against the aluminum end rail. Bend down the side seal to contact the Flap Seal per step 9.

STEP 15: To ensure proper tape adhesion press the Flap Seal firmly against the aluminum end rail along its entire length.

STEP 16: Install Tonneau cover on vehicle per cover installation instructions.

